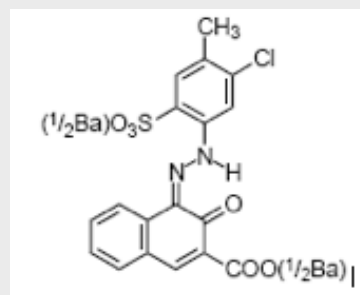


## IQC Ink SBI Red 482

| Product Description |                           |
|---------------------|---------------------------|
| Colour Index        | Pigment Red 48:2          |
| C.I.No.             | 15865:2                   |
| Chemical Type       | Monoazo                   |
| CAS No.             | 7023-61-2                 |
| EINECS              | 230-303-5                 |
| Formula             | $C_{18}H_{11}ClN_2O_6SCa$ |
| Molecular weight    | 458.90                    |

### Structural Formula



| Physical Properties          |            |
|------------------------------|------------|
| Colour                       | Bluish Red |
| Product Form                 | Powder     |
| Density [g/cm <sup>3</sup> ] | 1.8        |
| Oil Absorption [mg/100g]     | 45 – 55    |
| pH                           | 7.5 – 8.5  |
| BET Surface Area             | 58         |

### Fastness Properties

|           |     |
|-----------|-----|
| Heat [°C] | 180 |
| Light     | 6   |
| Acid      | 5   |
| Alkali    | 4   |
| Alcohol   | 5   |
| Soap      | 4   |
| Ester     | 5   |
| Benzol    | 5   |
| Keton     | 5   |

| Application Profile          |   |
|------------------------------|---|
| Solvent Based Ink            | ● |
| Water Based Ink              |   |
| Offset Ink                   |   |
| Sheetfed Ink                 |   |
| Textile Printing             |   |
| ● Main use, ○ additional use |   |